



# **HAWK 4500**

## **CONTROL SYSTEM**

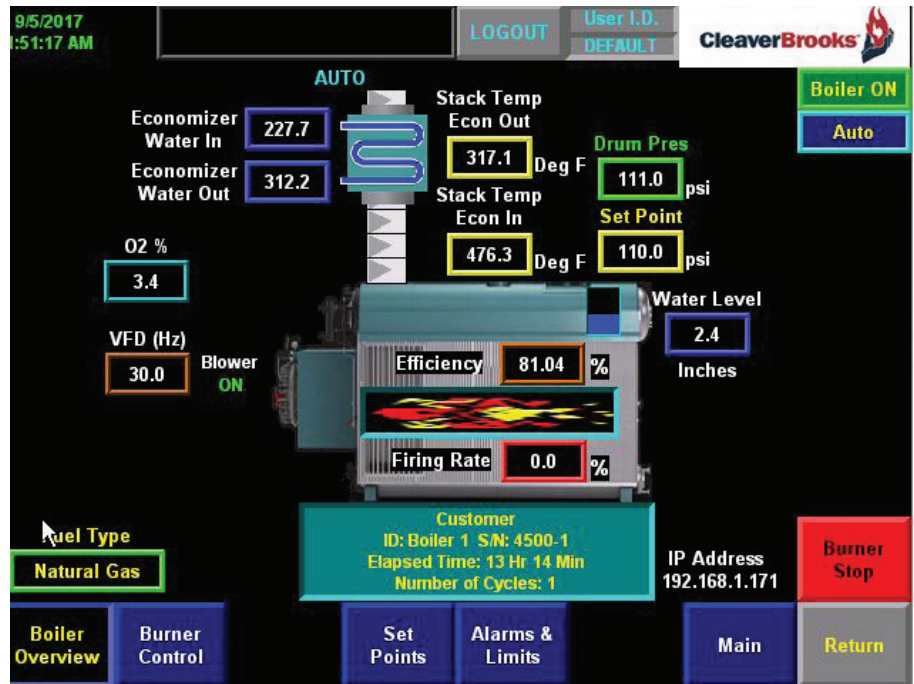
# A COMPLETE BOILER ROOM SOLUTION WITH MAXIMUM EFFICIENCY

The Hawk 4500 is a complete boiler control system designed to North American standards (UL, NFPA 85 or CSA B149.3) for the institutional and industrial markets.

The Hawk 4500 can be supplied on new industrial watertube boiler projects or retrofit applications.

This preconfigured boiler/burner control system will save commissioning time and money.

The result is unsurpassed performance when coupled with a C-B industrial burner system.



Distinctive HMI screen design

## Features

- ▶ Cutting edge combustion logic in a user-friendly environment
- ▶ Fully configured and tested at factory for easy commissioning from HMI
- ▶ Pre-characterized inputs and outputs to obtain linear response at all boiler loads and avoids tedious f(x) entries
- ▶ All Hawk 4500 systems include Ethernet communication, first out and alarm history, local or remote steam demand and much more
- ▶ Supplied with complete set of documentation meeting industry standards
- ▶ After-sale support by factory trained control system engineer and/or field service technician
- ▶ Training program available

# HAWK 4500 STANDARD AND OPTIONAL FEATURES

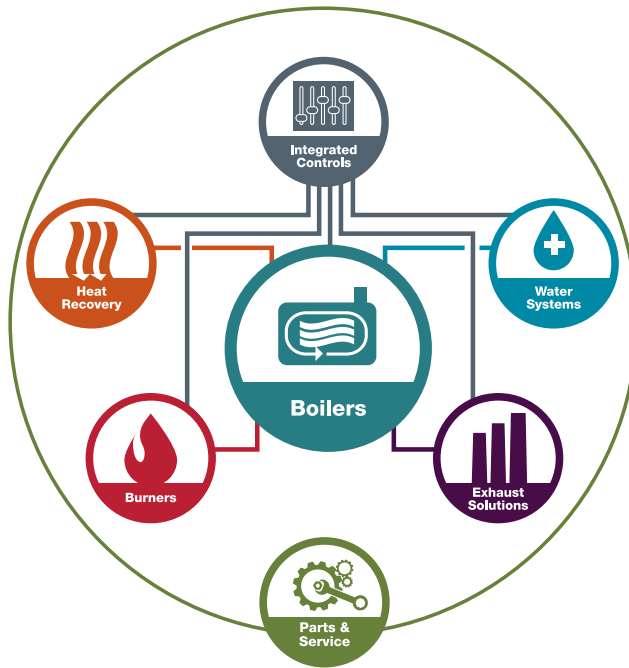


	STANDARD	OPTIONAL
Processor L36ERM	✓	
10" Panel View Plus Color Touch Screen	✓	
Nema 12	✓	
Nema 4		✓
Nema 4X		✓
FireyeCB 120E	✓	
One Fuel	✓	
Two Fuels		✓
Drum Level 1 Element		✓
Drum Level 2 Elements		✓
Drum Level 3 Elements	✓	
Draft Control		✓
O2 trim		✓
FGR		✓
Variable Speed Drive		✓
VFD Bypass		✓
Single Point Positioning (jackshaft)	✓	
Parallel Positioning		✓
Full Metering		✓
Economizer Flue Gases Outlet Temp Input		✓
Economizer Feedwater Inlet Temp Input		✓
Economizer Feedwater Outlet Temp Input		✓
Expanded Annunciation	✓	
Ethernet Communication	✓	
Ethernet Switch	✓	
Lan/Wan Interfacing		✓
Building Automation Interface		✓
Remote Start/Stop	✓	
PLC Based Combustion Control	✓	
SD Card Reader - Processor	✓	
Alarm History	✓	
Alarm Horn	✓	
Alarm Silencer Button Via Touch Screen	✓	
Custom Options: Contact Factory	✓	
Efficiency Calculation	✓	
Drum or Header Pressure Control	✓	
User Defined Analog Inputs	✓	

## Engineering Data

- ▶ **Supply Voltage: 120 VAC (+10%/-15%), 50 or 60 Hz**
- ▶ **Maximum Total Connected Load: 1800 VA**
- ▶ **Operating Temperature Limits: 32° to 130° F**
- ▶ **85% RH Continuous, Non-Condensing, Humidity 0.5G Continuous Vibration**

Height (wall-mounted)	48"
Height (free-standing option)	78"
Width	36"
Depth	12"
Weight (wall-mounted)	230lbs
Weight (free-standing)	250lbs



# Providing energy-efficient, environmentally friendly boiler room solutions

Cleaver-Brooks is one of only a few boiler room solution providers in the world to operate a dedicated research and development facility. Having pioneered several industry-leading technologies, we remain just as committed today to introducing technology and products that enable a more energy-efficient and environmentally friendly generation of steam and hot water.

We distribute our products through the Cleaver-Brooks Representatives Association, or CBRA, an alliance of independently owned and operated companies that provide boiler room products and service. CBRA companies can be counted on to provide Cleaver-Brooks products and parts, engineering support, customer training, technical service and system maintenance. To find a CBRA representative near you, please visit [cleaverbrooks.com/reps](http://cleaverbrooks.com/reps).



**Packaged Boiler Systems**  
 221 Law Street • Thomasville, GA 31792 USA  
 800-250-5883 • [info@cleaverbrooks.com](mailto:info@cleaverbrooks.com)  
[cleaverbrooks.com](http://cleaverbrooks.com)